



ISSN: 2454-9940



**INTERNATIONAL JOURNAL OF APPLIED
SCIENCE ENGINEERING AND MANAGEMENT**

E-Mail :
editor.ijasem@gmail.com
editor@ijasem.org

www.ijasem.org

Internet of Things (IOT)-based remote heart rate variability (HRV) monitoring is required for hypertensive individuals

Dr.P.K.Subhudi, MANAS RANJAN BISWAL, Dr BIGHNESWAR PANDA

ABSTRACT

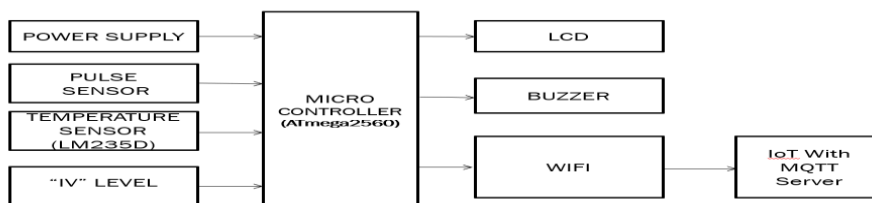
What we call "heart rate variability" (HRV) is actually the variation in time between individual heartbeats. HRV analysis is particularly sensitive to coronary disease complications, diabetes, autonomous dysrhythmic illness issues (such as hypertension), and a wide range of chronic degenerative medical diseases. When HRVs are exposed to certain medical issues, they can be used as a diagnostic tool, a prognostic tool, and they can improve the efficacy of the treatment provided. Stroke and high-risk cardiac death are common in the border population, which includes people with and without a cardiac history. In these potentially life-threatening situations, keeping an eye on HRV values could inform medical decisions. This article discusses a low-cost, easy-to-use, remote HRV monitoring device that makes use of Internet of Things (IoT) technology, and is intended for patients with prehypertension. In the proposed system, an Internet of Things-based pulse sensor is used to extract HRV characteristics.

1. INTRODUCTION

The execute design is the safest method of monitoring the patient's heart rhythm. The songs are influenced by the environment. To be able to live, the patients must be kept close together. In order of guy who it is, patient status inside the icu's add houses homes the mechanism has been discovered. Will you upload the information on the internet? What are the curing parameters going to

be? This, too, can be operated remotely. the notion that anything is feasible (iot). The fundamental idea of the technique of propagation is that patients will be won by continuously tracking the proposed gadget via the internet. Heart rate and atmospheric conditions will be used to diagnose patient issues and provide support for different emotions

BLOCK DIAGRAM:



Professor
 Department: Ece
 Visakha Institute of Engineering & Technology,
 Division,GVMC,Narava, Visakhapatham, Andhra Pradesh.

Description OfBlock Diagram:

The block diagram for the project "AN IOT Dependent REMOTE HRV" is shown in the graphic above (Heart Rate Variability).

The following items are required for this project:

1. Microcontroller (Arduino Mega): a small built-in circuit in an embedded device that is customized for a certain process. A typical microcontroller has a single chip CPU, memory, and input/output peripherals.

2.Power Supply: A power supply is a collection of electrically powered devices that are usually found in powered components.

3. Pulse Sensor: A pulse sensor, also known as a heart rate sensor, is a device that monitors pulses and heart rate in real time.

4.Temperature sensor: A temperature sensor is a system that is designed to accurately detect the warmth or coolness of an item. The LM35 is a temperature-proportional IC temperature sensor with a temperature-proportional output (in degrees Celsius). The temperature can be calculated more accurately with the LM35 than with a thermistor.

5. IV Level: A gadget that measures the "IV" patent FLUID LEVEL in a container for a high and low fluid level track.

6.LCD (LIQUID CRYSTAL DISPLAY): LCD refers to the display technology utilized in laptops and other electronic devices. LCD displays, which include LED and gas plasma technologies, may be much thinner than cathode ray tube technology.

7.Buzzer: A piezo buzzer is a kind of electrical device that emits sound as a warning, alert, or notification.

8. WiFi Module (ESP8266): The ESP8266 WiFi module is a standalone SOC with a TCP/IP optimized protocol stack that will enable WiFi network connection to any microcontroller.

Arduino MEGA2560:



The Arduino board is a microcontroller based on the Atmega 2560 that is open-source. The processing or cabling vocabulary is handled by the board's growing environment. With their simple to use platform, these boards have reloaded the automation sector, allowing even those with little technical expertise to learn the necessary programming skills and even run the Arduino unit. These boards are used to extend interactive artifacts independently; otherwise, we'll

connect to programs on your PC such as Max MSP, Processing, and Flash.

1. SOFTWARE:

Machine emulation is critical for completing the hardware deployment job effectively. What exactly does the term "machine simulation" imply? Now we'll go to the stage. Machine simulation technique includes a set of mathematical formulae for modeling a certain phenomenon.

It is, in essence, a software that allows the user to experience a simulation process without having to do it. If we agree on a professional level, you will use machine simulations to educate your customers how your software works. It may also be sociable, allowing customers to have a closer look at the features that interest them the most.

In our study, we mainly utilized Proteus version 8 as a simulation software. Below is a list of additional features that are required.

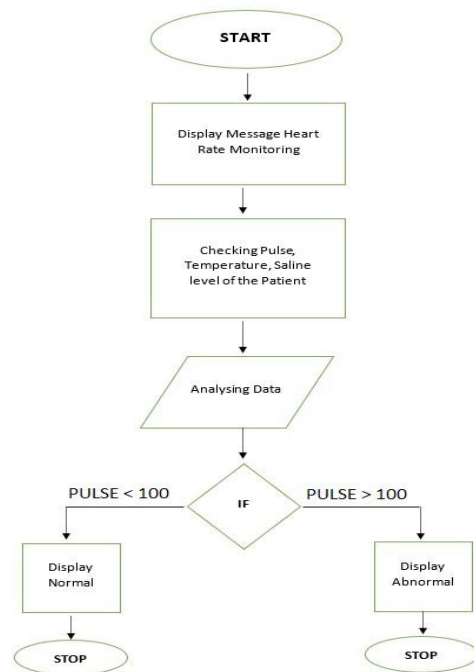
Algorithm from Algeria

1. The computer is turned on.
2. The LCD monitor's splash screen.
3. Sensor initialization and setup are steps three and four.
4. Data is recorded by the sensors.
5. C.P.U evaluates the data and performs the necessary tasks.

6. If the recorded values correspond to the typical situation, the LCD displays the message "NORMAL."

7. If the recorded values are abnormal, the LCD will display "ABNORMAL" and the gadget will sound a warning alarm buzzer.

FLOW CHART:



1. Result Analysis

Finally, we have achieved our target. As all the machinery is in our possession, we must implement the hardware. In brief, the whole process is as follows.



2. RESULTS

Finally, we applied the circuit successfully.

Limitations of this project circuit:

The following are the disadvantages of this initiative:

- 1.Redundancy of data.
2. Increase the bandwidth requirements for overhead data and sensor networks.

We've previously seen the testing and spoken about how well the project circuit worked. Since then, the circuit limitations have been defined. Nonetheless, this circuit still has some room for improvement and modification in the future.

3. CONCLUSION

“AN IOT BASED REMOTE HRV (Heart rate variability) MONITORING SYSTEM FOR

HYPERTENSIVE PATIENTS” is the title of the project. The system was successfully built and tested. The results show that the suggested device is suitable not only for real-time monitoring of a patient's heart rate and surrounding environment, but also for efficient remote control and emergency response.

REFERENCES

1. J. H. Hong, J. M. Kim, E. J. Cha, T. S. Lee, "A wireless 3-channel ECG transmission system using PDA phone", *Convergence Information Technology Int. Conf.*, pp. 462-465, 2007.
2. M. Urooj, K. K. Pillai, M. Tandon, S. P. Venkateshan, N. Saha, "Reference ranges for time domain parameters of heart rate variability in indian population and validation in hypertensive subjects and smokers", *Int J Pharm Pharm Sci.*, vol. 3, pp. 36-39, 2011.
3. P. J. Tello, O. Manjarres, M. Quijano, A. U. Blanco, "Remote monitoring system of ECG and temperature signals using Bluetooth", *Information Technology in Medicine and Education (ITME) Int. Symp.*, vol. 2, pp. 860-863, 2012.
4. J. Mohammed, C. H. Lung, A. Ocneanu, A. Thakral, C. Jones, A. Adler, "Internet of Things: Remote patient monitoring using web services and cloud computing", *Internet of Things (iThings) 2014 IEEE Int. Conf. and Green Computing and Communications (GreenCom) IEEE and Cyber Physical and Social Computing (CPSCom)*, pp. 256-263, 2014.
- 5.R.N. Kirtana, Y.V. Lokeswari (2017), "An IoT Based Remote HRV Monitoring System for Hypertensive Patients" Authors:
- 6.Dr. Y Raja Sree Rao (PhD) Working as a Professor in Lords institute of Engineering and Technology, Hyderabad. She is

having 31 years of Teaching Experience, Her area of interest is DE, Fault Tolerant Design, VLSI.

7.Syed Faizan Pursuing IV year Electronics and Communication Engineering in Lords institute of Engineering and Technology, Hyderabad.

8.MohdShoeb Pursuing IV year Electronic and Communication Engineering in Lords institute of Engineering and Technology, Hyderabad.

9.Mohd Junaid Siddiqui Pursuing IV year Electronics and Communication Engineering in Lords institute of Engineering and Technology, Hyderabad

10.Mohamed Abid Mohamed Pursuing IV year Electronics and Communication Engineering in Lords institute of Engineering a